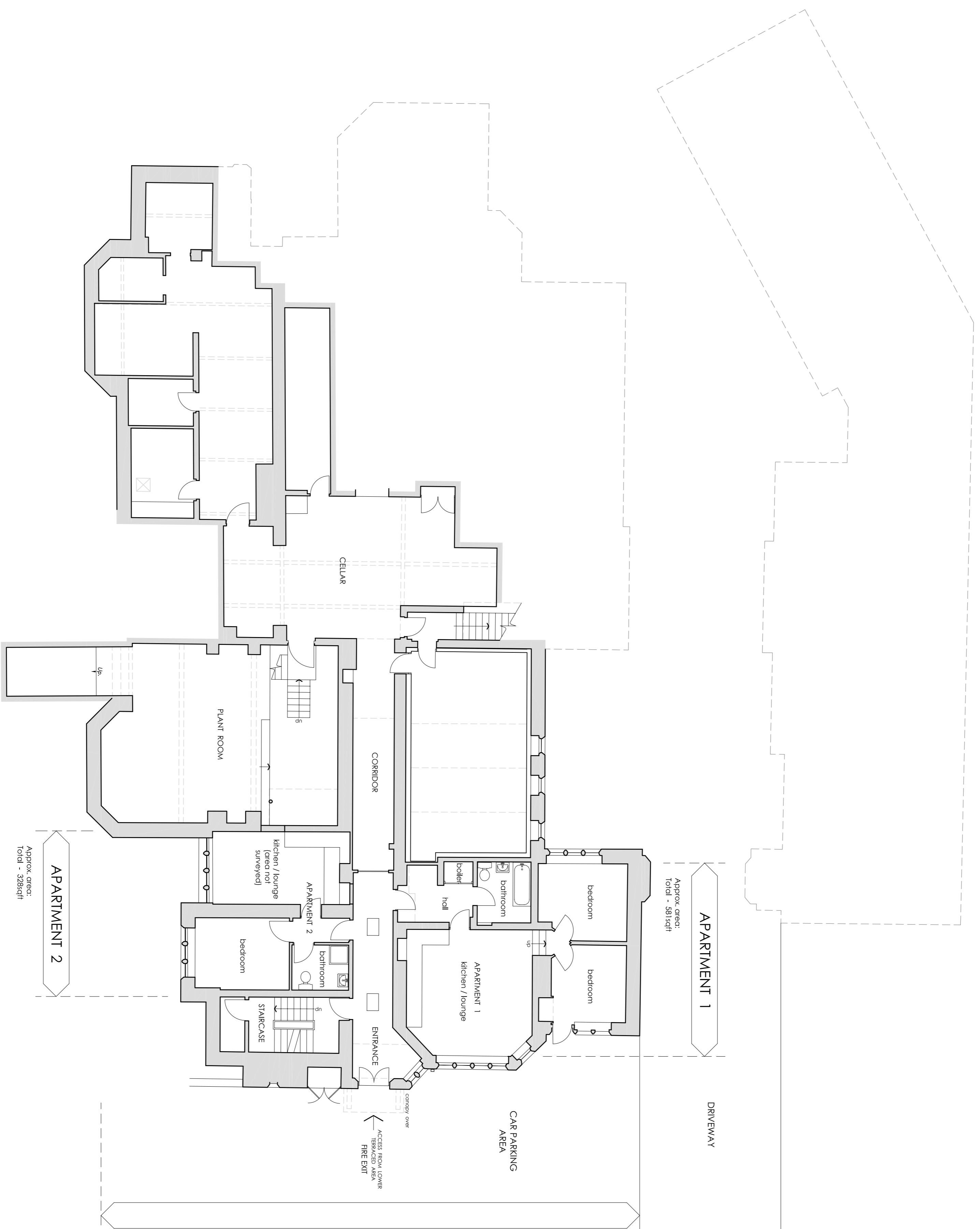


LOWER GROUND FLOOR PLAN - AS PROPOSED



APARTMENT 1
 Approx. area:
 Total - 581sqft

APARTMENT 2
 Approx. area:
 Total - 328sqft

EXISTING APARTMENTS RETAINED WITHIN MAIN BUILDING

Apartment 1 (2 Bed) - 581sqft - 53.97sqm
 Apartment 2 (1 Bed) - 328sqft - 30.47sqm
Total - 909sqft - 84.44sqm

Circulation corridor / Plant Room
 Cellars & Staircases at this level:
 - 2748sqft - 255.29sqm

Total G.I.A. is therefore - 3657sqft - 339.73sqm

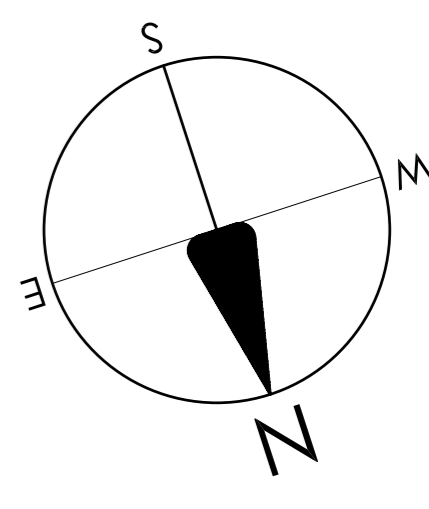
PLANNING ISSUE

PRELIMINARY REVISIONS PRIOR TO FIRST FORMAL ISSUE	
No.	DATE
1	17 March 2007
2	20 March 2007
3	20 March 2007
4	20 March 2007
5	20 March 2007

PROJECT
 Cromford Court
 Matlock Bath
 Derbyshire

DRAWING TITLE	
Lower Ground Floor Plan	
As Proposed	
JOB NUMBER	DRAWING SIZE
3190	A1
DATE	SCALE
March 2007	1:100

THIS DRAWING IS COPYRIGHT
 ANYONE USING THIS DRAWING IN CAD FORMAT MUST HAVE
 OUR WRITTEN PERMISSION TO DO SO AND MUST NOT
 REPRODUCE THE FILE OR PRINT IT OUT. ANY WORKING
 DRAWINGS MUST BE MADE FROM THE ORIGINAL ON SITE
 WORKING ONLY FROM GRID & FOUNDED DIMENSIONS.
 ANY DISCREPANCIES ARE TO BE REPORTED TO THE
 ARCHITECT BEFORE THE WORK IS DONE.



THIS DRAWING IS BASED ON TOPOGRAPHICAL SURVEY SUPPLIED BY GREENHATCH LTD.

CROMFORD COURT - MATLOCK BATH - DERBYSHIRE

HALL GREY ARCHITECTS
 THE MILL, LODGE LANE,
 DERBY, DER. S18 3AB
 TEL: 01332 371829
 FAX: 01332 371829
 E-MAIL: architects@hgrey.co.uk

DRAWN BY: *ghm*
 CHECKED BY: