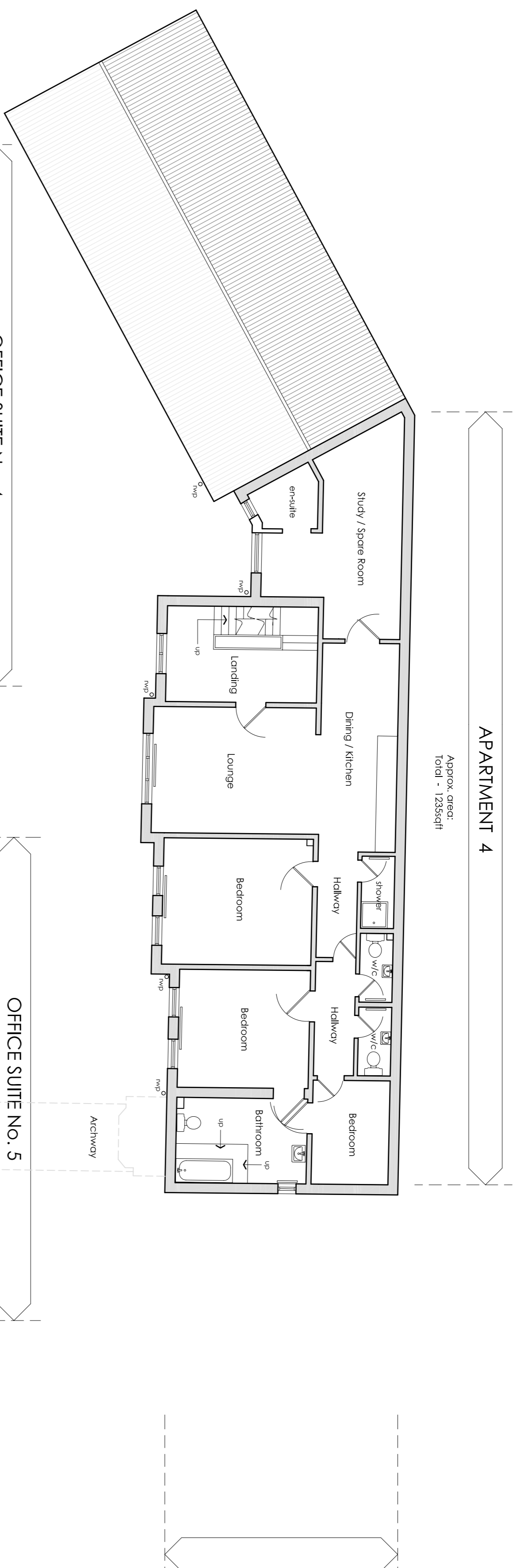
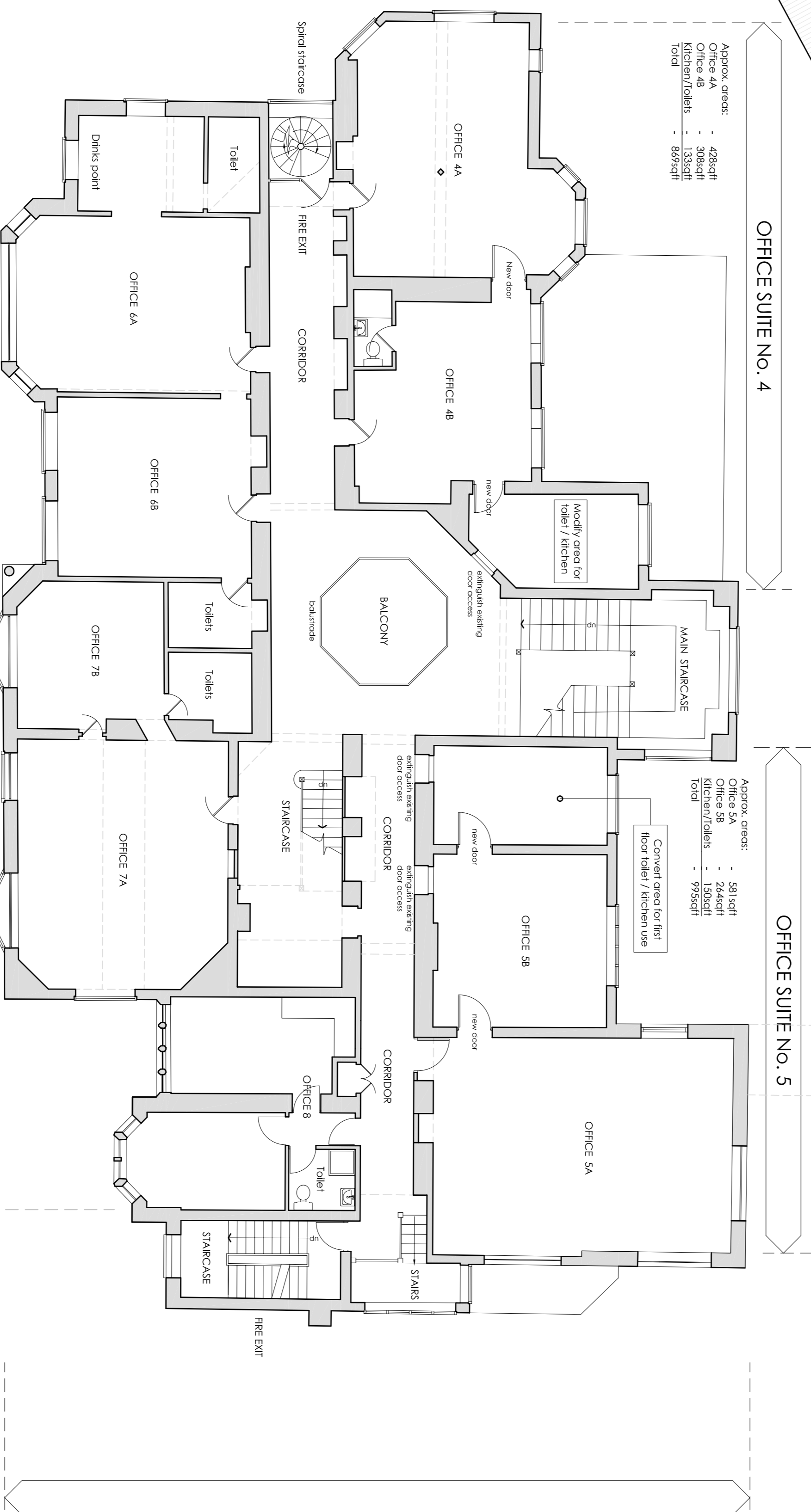


FIRST FLOOR PLAN - AS PROPOSED



APARTMENT 4
 Approx. areas:
 Total - 1235sqft

**EXISTING WEST WING ACCOMMODATION
 RETAINED**
 Apartment 4 (3 Bed) - 1235sqft - 114.73 sqm
 Total - 1235sqft - 114.73sqm



Approx. areas:
 Office 4A - 428sqft
 Office 4B - 308sqft
 Kitchen/Toilets - 133sqft
 Total - 869sqft

Approx. areas:
 Office 5A - 391sqft
 Office 5B - 248sqft
 Kitchen/Toilets - 158sqft
 Total - 797sqft

Approx. areas:
 Office 6A - 443sqft
 Office 6B - 502sqft
 Toilets - 502sqft
 Total - 862sqft

Approx. areas:
 Office 7A - 447sqft
 Office 7B - 582sqft
 Toilets - 582sqft
 Total - 684sqft

Approx. areas:
 Office 8 - 298sqft
 Office 8A - 338sqft
 Office 8B - 333sqft
 Total - 333sqft

**MAIN BUILDING TO BE REFURBISHED INTO
 PROPOSED OFFICE SUITES 4 - 8**

Total Office accommodation at this level:

Suite 4	- 869sqft - 80.73sqm
Suite 5	- 975sqft - 92.44sqm
Suite 6	- 862sqft - 80.07sqm
Suite 7	- 684sqft - 63.54sqm
Suite 8	- 333sqft - 30.94sqm
Total	- 3743sqft - 347.72sqm

Circulation corridors & staircases:
 - 1630sqft - 151.43sqm

Total G.I.A. is therefore - 5373sqft - 499.15sqm

PLANNING ISSUE

PRELIMINARY REVISIONS PRIOR TO FIRST FORMAL ISSUE

No.	DATE	REVISION
P1	17 March 2007	Issuing West Wing accommodation
		added
		TM

PROJECT
 Cromford Court
 Matlock Bath
 Derbyshire

DRAWING TITLE
 First Floor Plan
 As Proposed

JOB NUMBER	DRAWING SIZE	NUMBER	REVISION
3190	A1	07	
DATE	SCALE		
March 2007	1:100		

THIS DRAWING IS COPYRIGHT
 ANYONE USING THIS DRAWING IN CAD FORMAT MUST HAVE
 OUR WRITTEN PERMISSION TO DO SO, AND MUST NOT
 REMOVE THE HALL GREEN COPYRIGHT LOGO
 FROM ANY PRINTED OR ELECTRONIC VERSIONS ON SITE
 WORKING ONLY FROM GRID & FIGURED DIMENSIONS
 ANY DISCREPANCIES ARE TO BE REPORTED TO THE
 ARCHITECT BEFORE THE WORK IS DONE

HALL GREEN ARCHITECTS
 THE MILL, LODGE LANE,
 DERBY, DE1 3AB
 TEL: 01332 371829
 FAX: 01332 371829
 E-MAIL: architects@hgreys.co.uk

DRAWN BY: *ghms* CHECKED BY:

CROMFORD COURT - MATLOCK BATH - DERBYSHIRE

THIS DRAWING IS BASED ON TOPOGRAPHICAL SURVEY SUPPLIED BY GREENHATCH LTD.