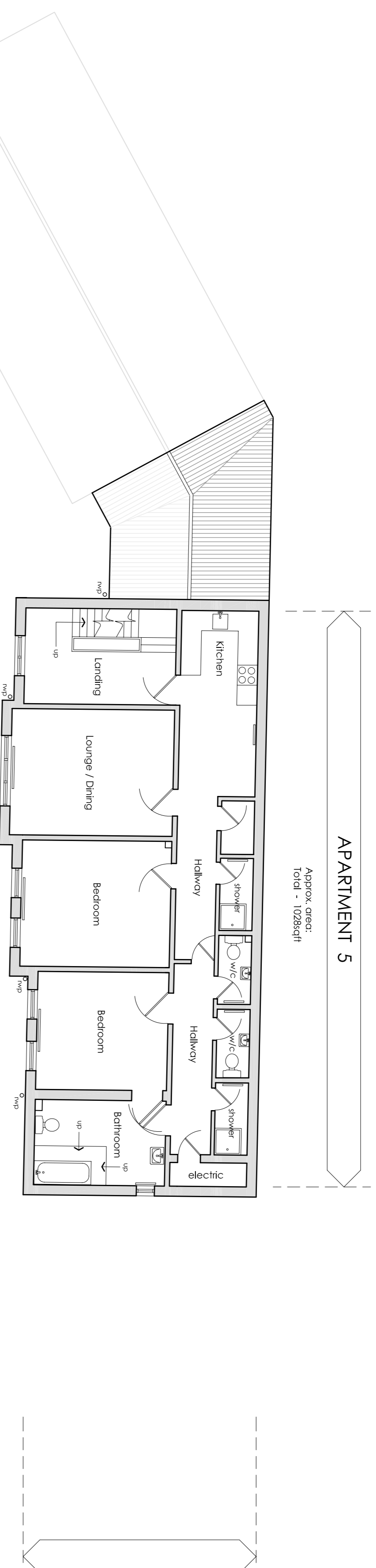
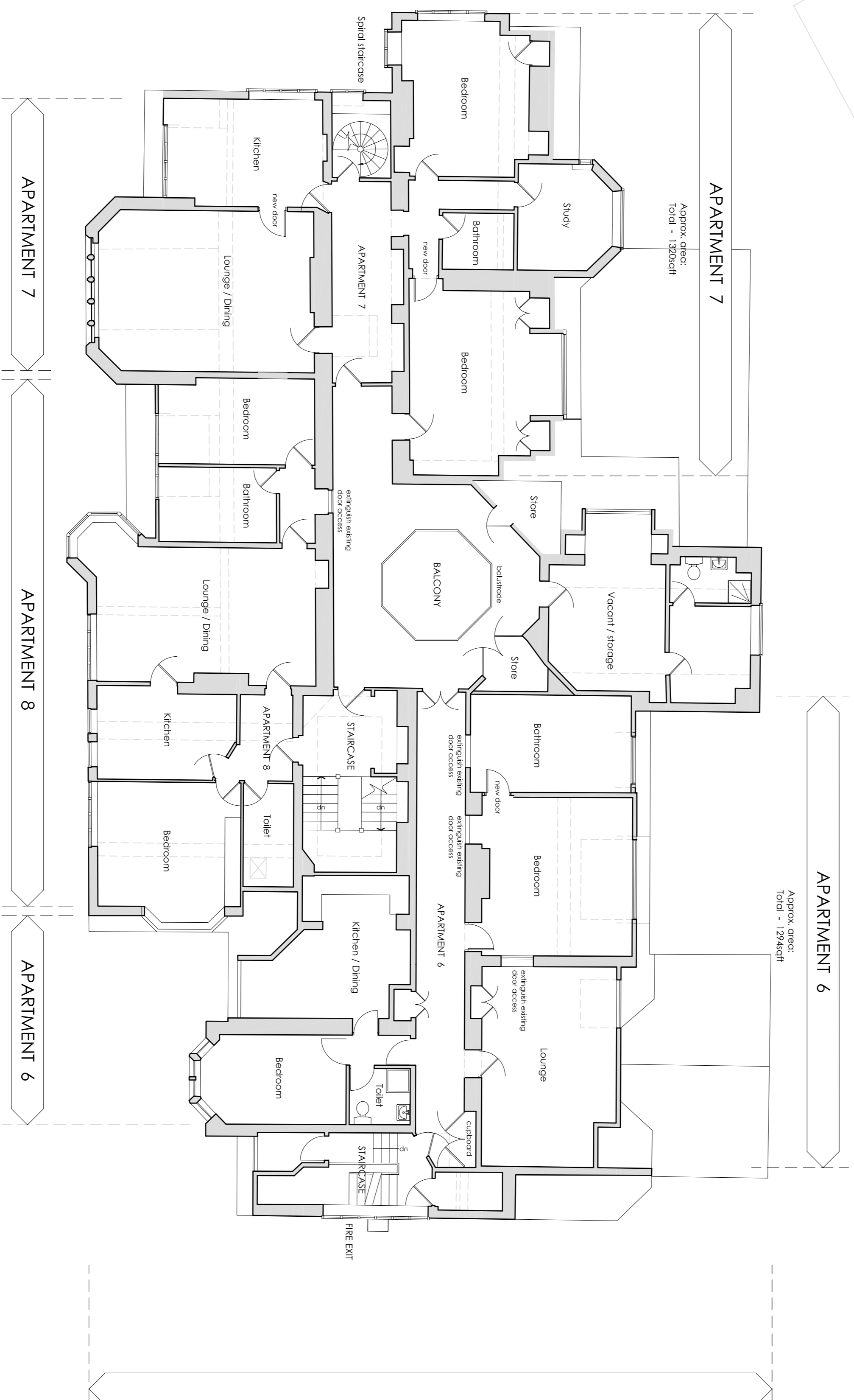


SECOND FLOOR PLAN - AS PROPOSED



**EXISTING WEST WING
ACCOMMODATION RETAINED**

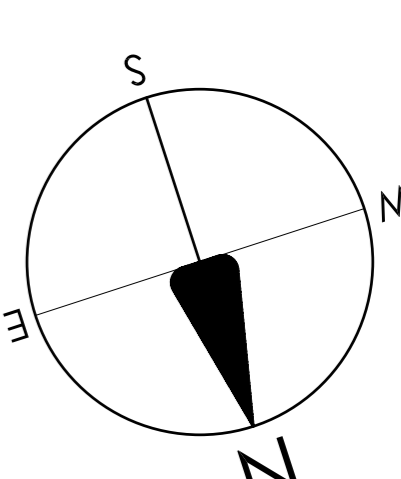
Apartment 5 (2 bed) - 1028sqft - 95.50sqm
Total - 1028sqft - 95.50sqm



**MAIN BUILDING TO BE REFURBISHED INTO
PROPOSED APARTMENTS**

Apartment 6 (2 bed) - 1274sqft - 120.18sqm
Apartment 7 (2 bed) - 1320sqft - 122.69sqm
Apartment 8 (2 bed) - 1000sqft - 92.97sqm
Total - 3614sqft - 335.84sqm

Total GIA of this level is 4468sqft - 415.07sqm



THIS DRAWING IS BASED ON TOPOGRAPHICAL SURVEY SUPPLIED BY GREENHATCH LTD.

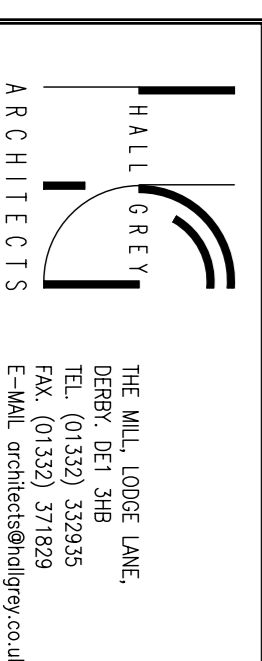
PLANNING ISSUE

A	26 April 2007	Proposed office accommodation received of traffic study results.	TM
PRELIMINARY REVISIONS PRIOR TO FIRST FORMAL ISSUE			
P1	17 March 2007	Existing West Wing accommodation added	TM
No.	DATE	REVISION	

PROJECT
Cromford Court
Matlock Bath
Derbyshire

DRAWING TITLE Second Floor Plan			
As Proposed			
JOB NUMBER	DRAWING SIZE	NUMBER	REVISION
3190	A1	08	A
DATE	SCALE		
March 2007	1:100		

THIS DRAWING IS COPYRIGHT
ANYONE USING THIS DRAWING IN CAD FORMAT MUST HAVE
OUR WRITTEN PERMISSION TO DO SO, AND MUST NOT
REPRODUCE THE FILE OR COPY IT TO ANY OTHER SITE
WITHOUT OUR WRITTEN PERMISSION. ANY DISCREPANCIES
WORKING ONLY FROM GRID & FIGURED DIMENSIONS.
ANY DISCREPANCIES ARE TO BE REPORTED TO THE
ARCHITECT BEFORE THE WORK IS DONE.



DRAWN BY: **dmh**

CHECKED BY:

CROMFORD COURT - MATLOCK BATH - DERBYSHIRE